



## LIST OF BEDROOMS & FLOOR PLANS AT BARLEMOOR HOUSE

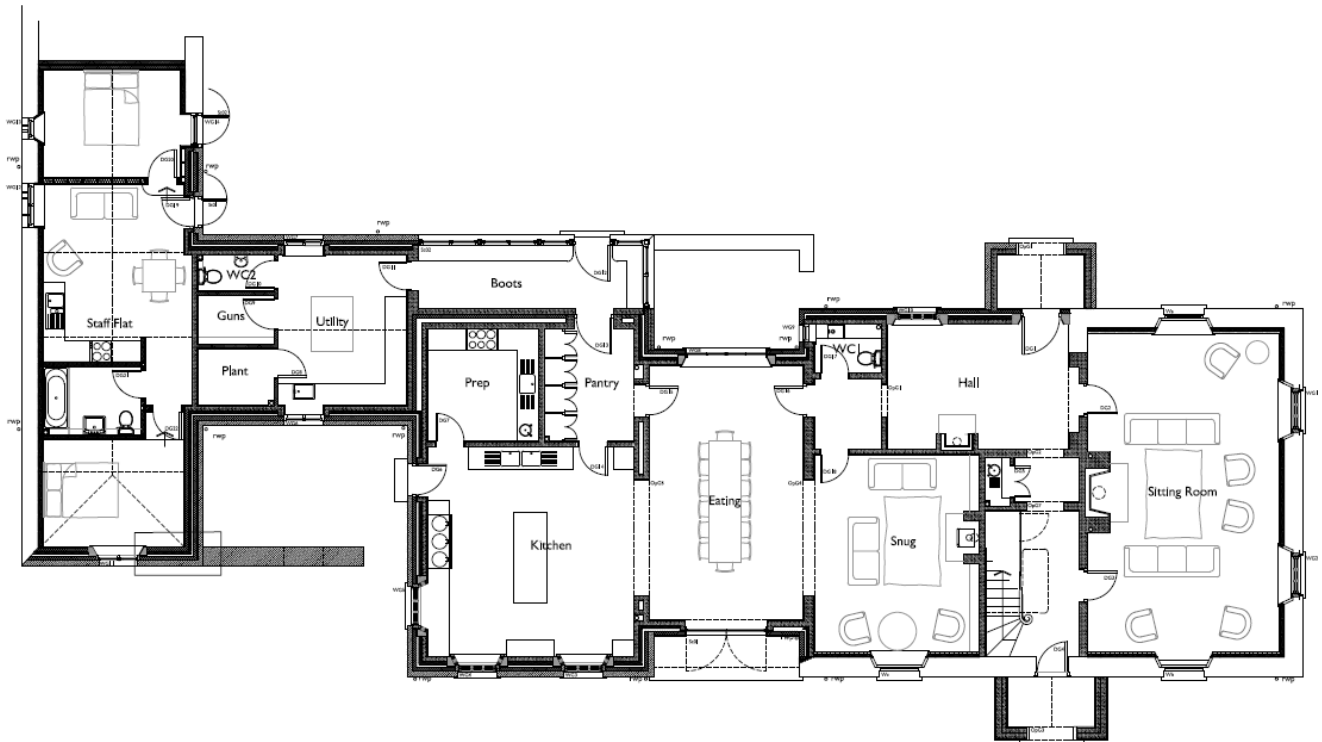
### BEDROOMS – sleeps 18 in 9 bedrooms

● indicates a choice of bed configuration

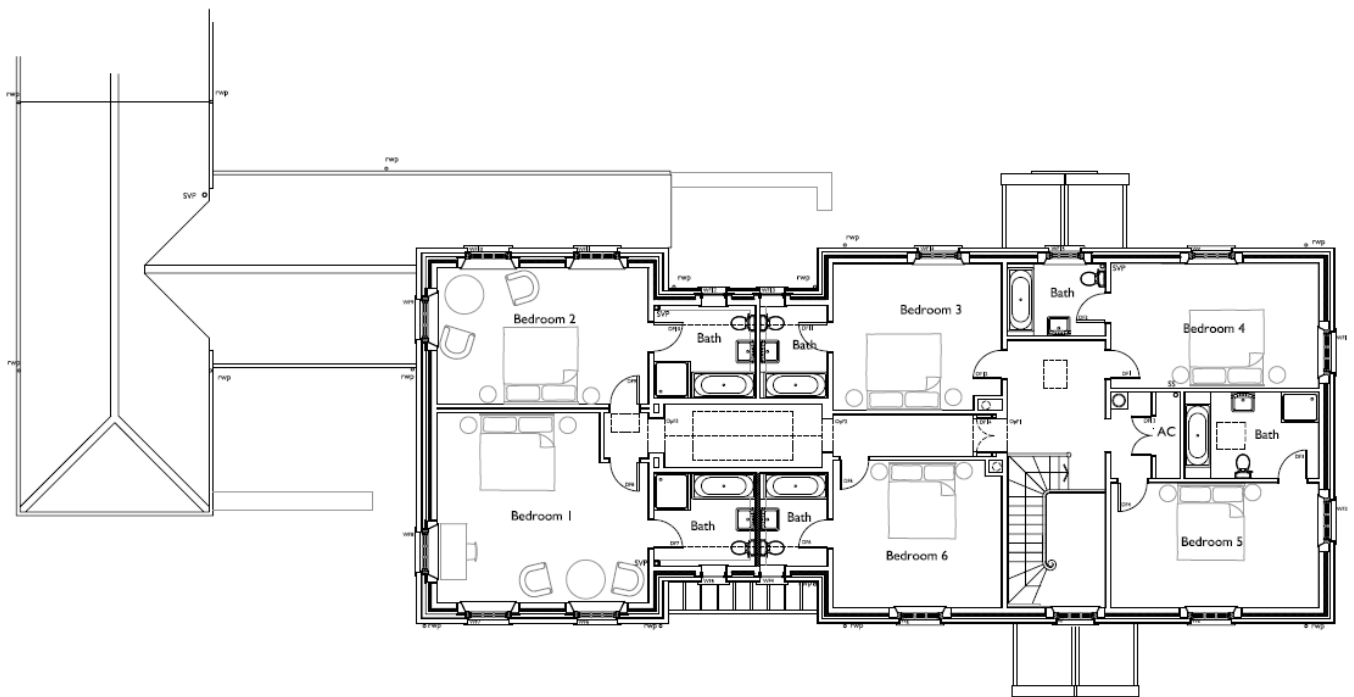
Bedroom	Beds	Sleeps	Features
1 Ricksy Ball (First floor, main house)	Super king size four poster bed	2	Free-standing cast iron bath, separate shower.
2 Hoar Oak (First floor, main house)	Super king size four poster bed	2	Free-standing cast iron bath, separate shower.
3 Exe Head (First floor, main house)	Super king size bed	2	Marble clad bathroom with very large bath with shower over.
4 Trout Hill (First floor, main house)	Super king size bed	2	Marble clad wet room with double-ended bath with shower over.
5 Cow Castle (First floor, main house)	King size four poster bed	2	Free-standing double ended bath, large basin, separate shower.
6 Deer Park (First floor, main house)	King size brass bed	2	Very large bath with shower over.
7 Pinkery (Stables)	King size bed	2	Double ended bath, separate shower.
8 Prayway (Stables)	King size bed (can be divided into two single beds) ●	2	Double ended bath, separate shower.
9 Buscombe (Stables)	Antique oak twin beds	2	Double ended bath, separate shower.
<b>Total</b>		<b>18</b>	



## GROUND FLOOR PLAN (main house)



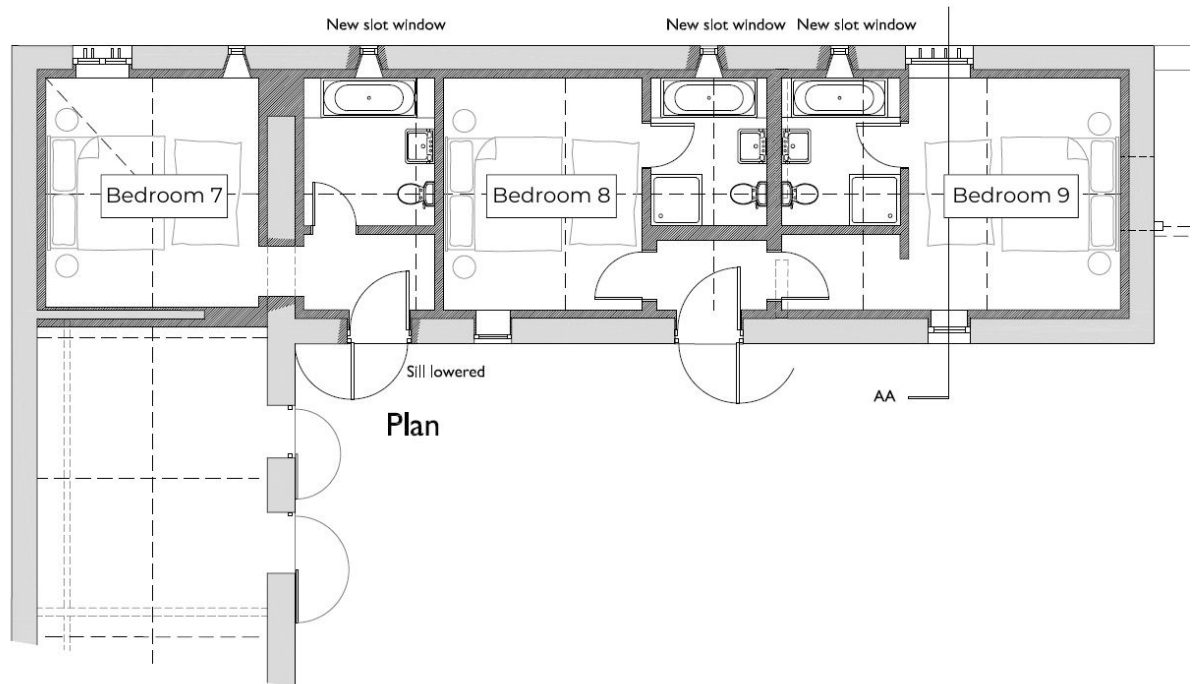
## FIRST FLOOR PLAN (main house)



BIG HOUSE EXPERIENCE

## FLOOR PLAN (stables)

---



Please note, bedroom 7's bathroom has a bath and separate shower (the shower is not shown on the floor plan above).



BIG HOUSE EXPERIENCE