



LIST OF BEDROOMS & FLOOR PLANS AT COURTYARD GRANARY

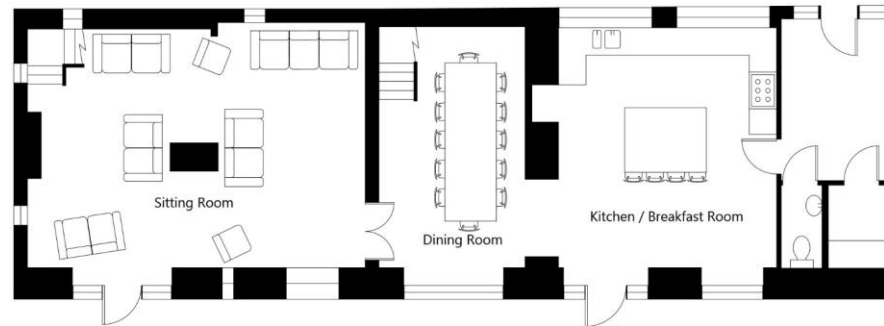
BEDROOMS – sleeps 14 in 6 bedrooms

Bedroom	Beds	Sleeps	Features
Bedroom 1 (first floor)	King size bed	2	Accessed via stairs from living room. Permanent cot in bedroom. Shared bathroom with bath and overhead shower (shared with bedroom 2).
Bedroom 2 (first floor)	Twin beds	2	Accessed via stairs from living room. Shared bathroom with bath and overhead shower (shared with bedroom 1).
Bedroom 3 (first floor)	King size bed	2	Accessed via stairs from dining room. Shared shower room (shared with bedrooms 4 & 5).
Bedroom 4 (first floor)	King size bed	2	Accessed via stairs from dining room. Shared shower room (shared with bedrooms 3 & 5). Space for a cot.
Bedroom 5 (first floor)	Twin beds	2	Accessed via stairs from dining room. Shared shower room (shared with bedrooms 3 & 4). Space for a cot.
Bedroom 6 (first floor)	Two king size beds	4	Adjoining annex accessed via an external staircase. Ensuite shower room. TV, mini fridge and kettle. Space for a cot.
Total		14	

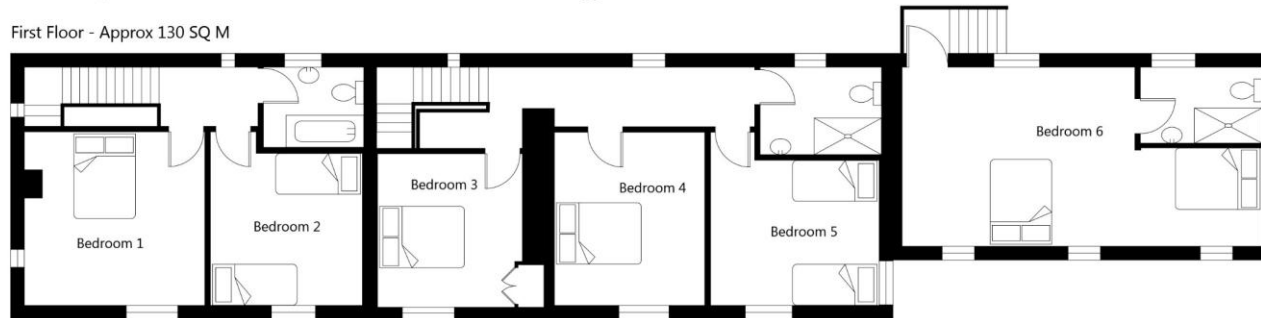


FLOOR PLANS

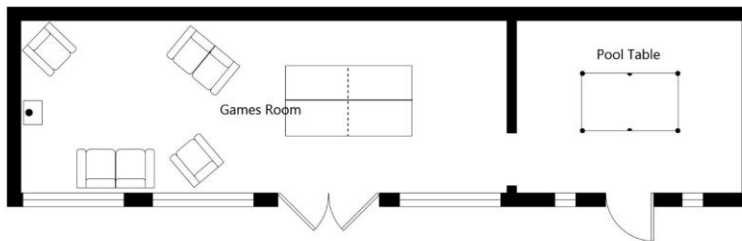
Ground Floor - Approx 101 SQ M



First Floor - Approx 130 SQ M



Games Room - Approx 59 SQ M



NOT TO SCALE - FOR ILLUSTRATIVE PURPOSES ONLY
All Measurements and fixtures including doors and windows
are approximate and should be independently verified.
www.exposurepropertymarketing.com © 2018



BIG HOUSE EXPERIENCE